

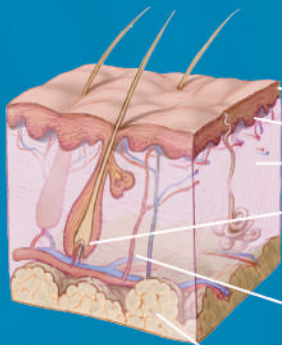


### Cell Applications, Inc. advantage:

- High purity and low passage
- Rigorous quality control
- Cells from a variety of tissues & species
- Matched sets from the same donor
- Maximum flexibility
- Custom services
- Ready-to-use Total Kits

### > 130 published studies on:

- Epithelial function & disease
- Toxicology & cosmetic formulations
- HPV infection & oncogenic potential
- Melanoma oncogenesis and treatment
- Effects of radiation, stress & inflammation
- Cellular senescence & reprogramming
- Primary and immortalized cells comparison
- Endothelial physiology & angiogenesis
- Cellular basis of diabetes and obesity



### Epidermis/Dermis Cells

- Epidermal Keratinocytes (H, R)
- Epidermal Melanocytes (H)
- Dermal Fibroblasts (H)
- Hair Follicle Dermal Papilla Cells (H)

### Microvasculature Cells

- Dermal Lymphatic Microvascular EC (H)
- Dermal Microvascular EC (H)
- Dermal Microvascular EC (H), Pre-Screened

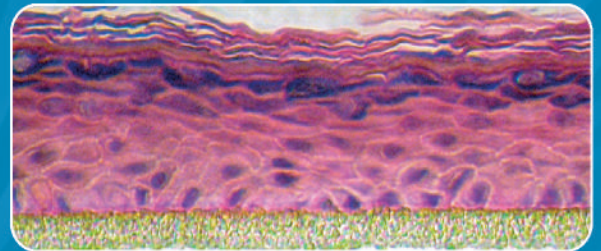
### Fat Cells

- Adipocytes (H)
- Pre-Adipocytes (H)
- Pre-Adipocytes (H), pre-screened

EC: Endothelial Cells  
MV: Microvascular  
DP: Dermal Papilla  
H: Human, R: Rat

### HEK 3D skin model

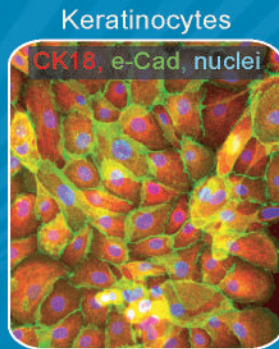
When grown on inserts and provided with the liquid/air interface, HEK can differentiate into a stratified squamous epithelium and serve as a more physiological 3D tissue model for in vitro studies.



Melanocytes



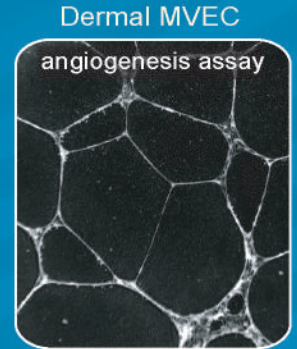
Dermal Fibroblasts



Keratinocytes



Hair Follicle DP Cells



Dermal MVEC

**ORDER TODAY!**